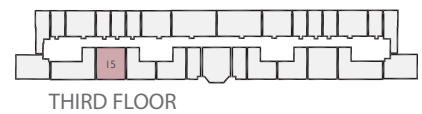
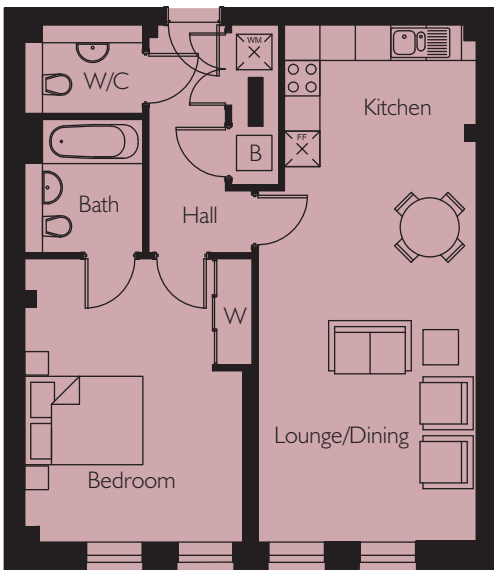


Apartment 15

Eaststand Apartments



Lounge/Dining	5751mm x 3675mm	18'10" x 12'0"
Kitchen	3250mm x 2810mm	10'8" x 9'2"
Bedroom	4433mm* x 3675mm	14'6"* x 12'0"
Area	65.3 m ²	702.8 sq.ft

*(max)

Energy Efficiency Rating		
	Current	Potential
Very energy efficient - lower running costs		
(92-plus) A		
(81-91) B	87	88
(69-80) C		
(55-68) D		
(39-54) E		
(21-38) F		
(1-20) G		
Not energy efficient - higher running costs		
England & Wales	EP Directive 2002/91/EC	

Environmental Impact (CO ₂) Rating		
	Current	Potential
Very environmentally friendly - lower CO ₂ emissions		
(92-plus) A		
(81-91) B	88	88
(69-80) C		
(55-68) D		
(39-54) E		
(21-38) F		
(1-20) G		
Not environmentally friendly - higher CO ₂ emissions		
England & Wales	EU Directive 2002/91/EC	