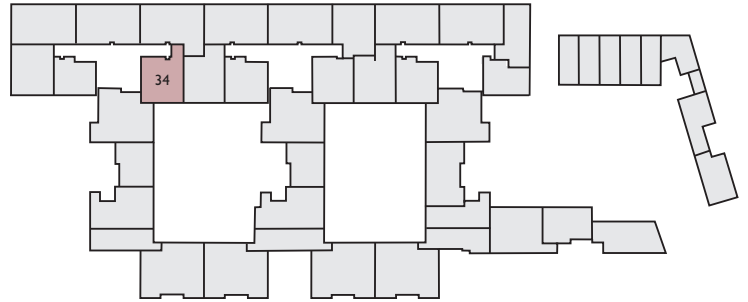
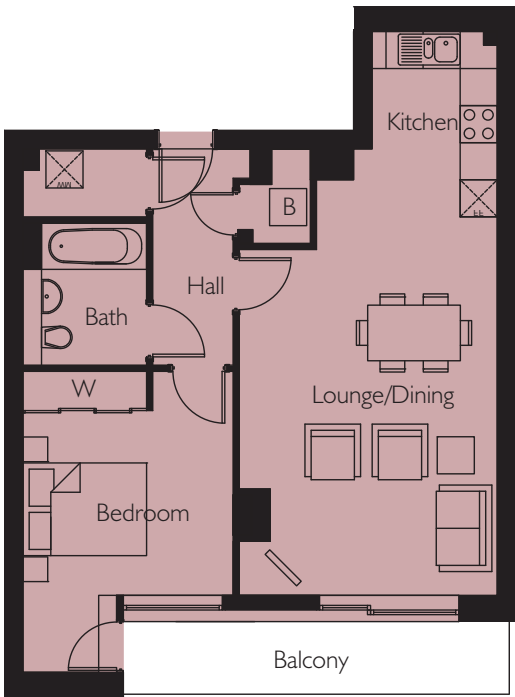


# Apartment 34

## Northstand Apartments



FIRST FLOOR



Lounge/Dining	6125mm x 4120mm	20'1" x 13'6"
Kitchen	3000mm*x 2925mm*	9'10"* x 9'7"*
Bedroom	4870mm*x 3400mm	15'11"* x 11'1"
Area	60.1 m2	646.9 sq.ft
*(max)		

Energy Efficiency Rating		
	Current	Potential
<i>Very energy efficient - lower running costs</i>		
(92-plus) <b>A</b>		
(81-91) <b>B</b>	<b>87</b>	<b>88</b>
(69-80) <b>C</b>		
(56-68) <b>D</b>		
(39-54) <b>E</b>		
(21-38) <b>F</b>		
(1-20) <b>G</b>		
<i>Not energy efficient - higher running costs</i>		
<b>England &amp; Wales</b>		EU Directive 2002/91/EC

Environmental Impact (CO <sub>2</sub> ) Rating		
	Current	Potential
<i>Very environmentally friendly - lower CO<sub>2</sub> emissions</i>		
(92-plus) <b>A</b>		
(81-91) <b>B</b>	<b>88</b>	<b>89</b>
(69-80) <b>C</b>		
(56-68) <b>D</b>		
(39-54) <b>E</b>		
(21-38) <b>F</b>		
(1-20) <b>G</b>		
<i>Not environmentally friendly - higher CO<sub>2</sub> emissions</i>		
<b>England &amp; Wales</b>		EU Directive 2002/91/EC