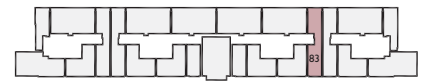
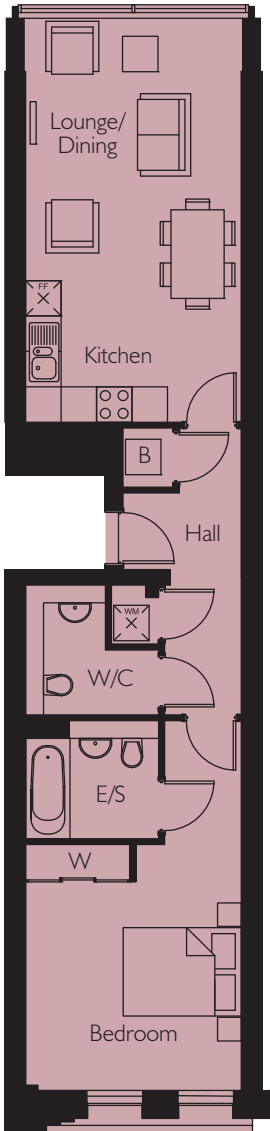


Apartment 83

Eaststand Apartments



FOURTH FLOOR

Lounge/Dining	4395mm x 3700mm	14'5" x 12'1"
Kitchen	3650mm x 2450mm	11'11" x 8'0"
Bedroom	4167mm* x 3650mm	13'8"* x 11'11"
Area	61.6 m ²	663 sq.ft

*(max)

Energy Efficiency Rating		
	Current	Potential
<i>Very energy efficient - lower running costs</i>		
(92-plus) A		
(81-91) B	86	88
(69-80) C		
(55-68) D		
(39-54) E		
(21-38) F		
(1-20) G		
<i>Not energy efficient - higher running costs</i>		
England & Wales	EU Directive 2002/91/EC	

Environmental Impact (CO ₂) Rating		
	Current	Potential
<i>Very environmentally friendly - lower CO₂ emissions</i>		
(92-plus) A		
(81-91) B	88	88
(69-80) C		
(55-68) D		
(39-54) E		
(21-38) F		
(1-20) G		
<i>Not environmentally friendly - higher CO₂ emissions</i>		
England & Wales	EU Directive 2002/91/EC	