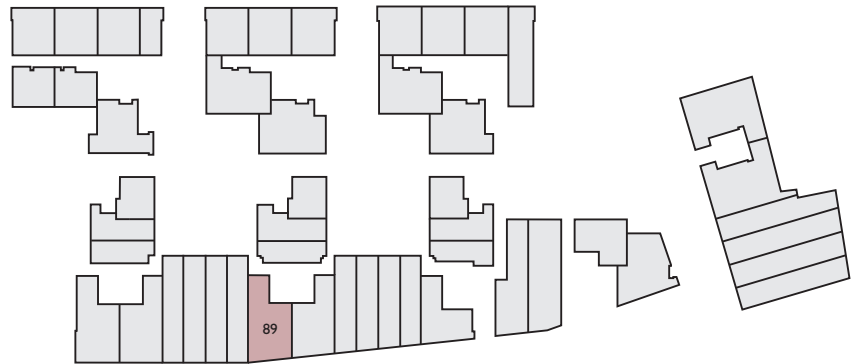
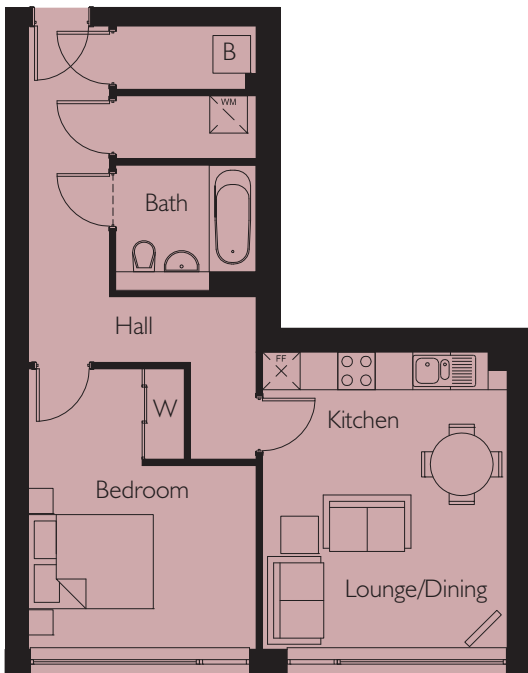


Apartment 89

Northstand Apartments



LOWER GROUND FLOOR



Lounge/Dining

/Kitchen

Bedroom

Area

4745mm x 3907mm

4480mm x 3643mm

55.1 m²

15'6" x 12'10"

14'8" x 11'11"

593 sq.ft

Energy Efficiency Rating		
	Current	Potential
Very energy efficient - lower running costs		
(92-plus) A		
(81-91) B	84	85
(69-80) C		
(56-68) D		
(39-64) E		
(21-38) F		
(1-20) G		
Not energy efficient - higher running costs		
England & Wales	EU Directive 2002/91/EC	

Environmental Impact (CO ₂) Rating		
	Current	Potential
Very environmentally friendly - lower CO ₂ emissions		
(92-plus) A		
(81-91) B	85	86
(69-80) C		
(56-68) D		
(39-64) E		
(21-38) F		
(1-20) G		
Not environmentally friendly - higher CO ₂ emissions		
England & Wales	EU Directive 2002/91/EC	