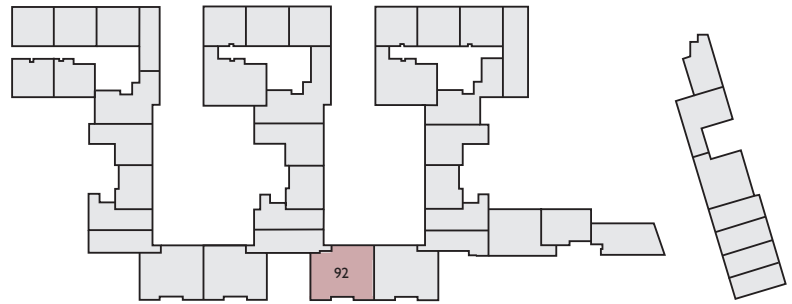
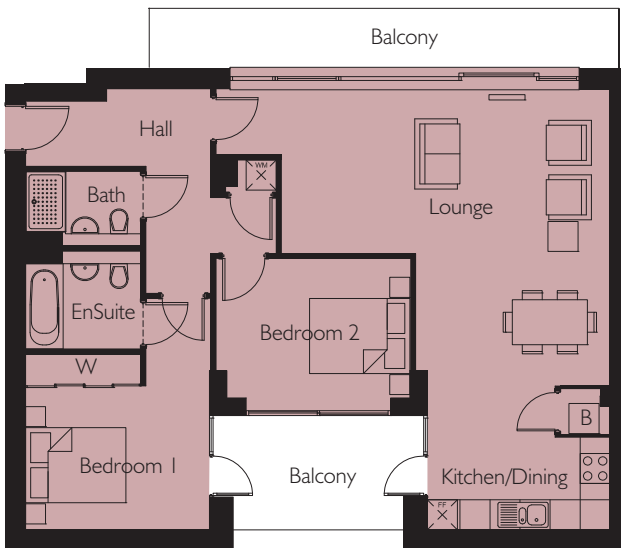


Apartment 92

Northstand Apartments



GROUND FLOOR



Lounge/Dining	7838mm x 5936mm	25'8" x 19'5"
Kitchen	3620mm x 2869mm	11'10" x 9'5"
Bedroom 1	3665mm x 3510mm*	12'0" x 11'6"*
Bedroom 2	3885mm x 3036mm	12'9" x 9'11"
Area	91.2 m ²	981.6 sq.ft

*(max)

Energy Efficiency Rating		
	Current	Potential
<i>Very energy efficient - lower running costs</i>		
(92-plus) A		
(81-91) B	85	86
(69-80) C		
(55-68) D		
(39-54) E		
(21-38) F		
(1-20) G		
<i>Not energy efficient - higher running costs</i>		
England & Wales	EU Directive 2002/91/EC	

Environmental Impact (CO ₂) Rating		
	Current	Potential
<i>Very environmentally friendly - lower CO₂ emissions</i>		
(92-plus) A		
(81-91) B	86	87
(69-80) C		
(55-68) D		
(39-54) E		
(21-38) F		
(1-20) G		
<i>Not environmentally friendly - higher CO₂ emissions</i>		
England & Wales	EU Directive 2002/91/EC	