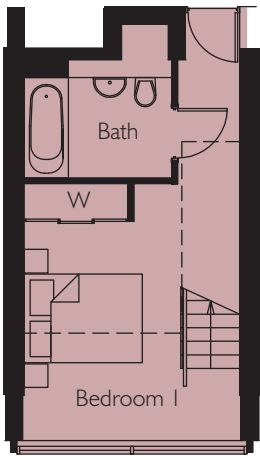
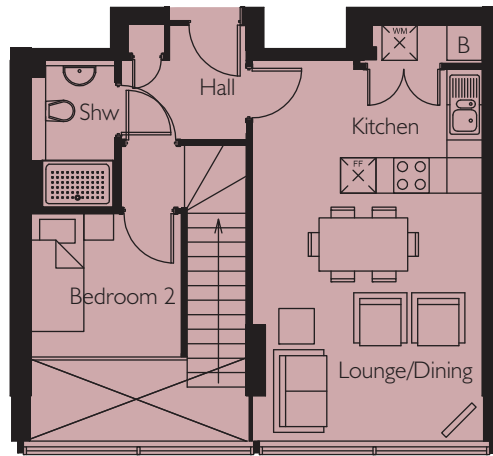


# Apartment 94

## Weststand Apartments



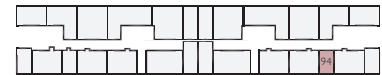
Lower Floor



Upper Floor



FIRST FLOOR



GROUND FLOOR

Lounge/Dining	4200mm x 3925mm*	13'9" x 12'0"*
Kitchen	3900mm x 2250mm*	12'9" x 8'4"*
Bedroom 1	4350mm* x 3700mm*	14'3" x 12'1"*
Bedroom 2	2550mm x 2375mm	8'4" x 7'9"
Area	67.4 m <sup>2</sup>	725.4 sq.ft

\*(max)

Energy Efficiency Rating		
	Current	Potential
Very energy efficient - lower running costs		
(92-plus) <b>A</b>		
(81-91) <b>B</b>	<b>82</b>	<b>83</b>
(69-80) <b>C</b>		
(55-68) <b>D</b>		
(39-54) <b>E</b>		
(21-38) <b>F</b>		
(1-20) <b>G</b>		
Not energy efficient - higher running costs		
<b>England &amp; Wales</b>	U/ Directive 0000/91/UC	

Environmental Impact (CO <sub>2</sub> ) Rating		
	Current	Potential
Very environmentally friendly - lower CO <sub>2</sub> emissions		
(92-plus) <b>A</b>		
(81-91) <b>B</b>	<b>83</b>	<b>84</b>
(69-80) <b>C</b>		
(55-68) <b>D</b>		
(39-54) <b>E</b>		
(21-38) <b>F</b>		
(1-20) <b>G</b>		
Not environmentally friendly - higher CO <sub>2</sub> emissions		
<b>England &amp; Wales</b>	U/ Directive 0000/91/UC	