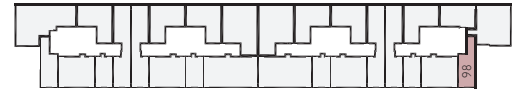
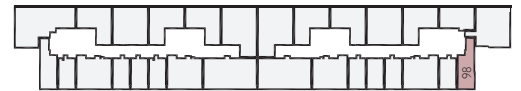


Apartment 98

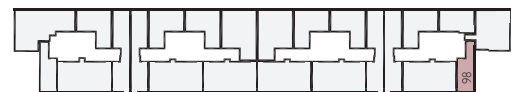
Weststand Apartments



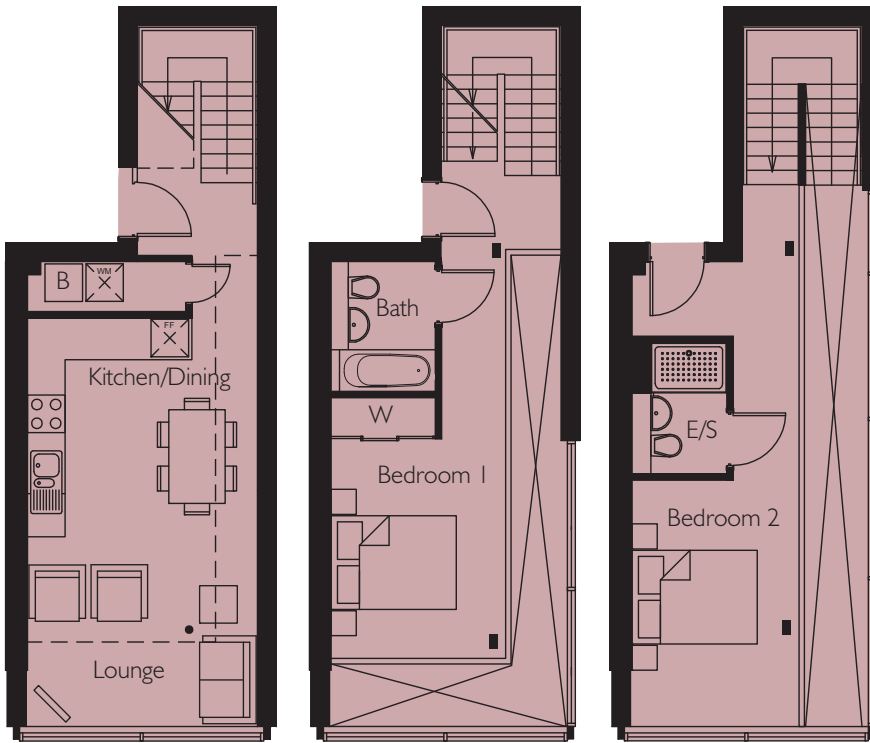
SECOND FLOOR



THIRD FLOOR



FOURTH FLOOR



Lower Floor

Upper Floor (1)

Upper Floor (2)

Kitchen/Lounge

/Dining 6535mm x 3800mm* 21'5" x 12'2"*

Bedroom 1 3682mm* x 2674mm* 13'5" x 8'9"*

Bedroom 2 3940mm x 2689mm 12'11" x 8'9"

Area 73.7 m² 793.3 sq.ft

*(max)

Energy Efficiency Rating		
	Current	Potential
Very energy efficient - lower running costs		
(92-plus) A		
(81-91) B		
(69-80) C	78	80
(56-68) D		
(39-54) E		
(21-38) F		
(1-20) G		
Not energy efficient - higher running costs		
England & Wales	EU Directive 2002/91/EC	

Environmental Impact (CO ₂) Rating		
	Current	Potential
Very environmentally friendly - lower CO ₂ emissions		
(92-plus) A		
(81-91) B		
(69-80) C	80	81
(56-68) D		
(39-54) E		
(21-38) F		
(1-20) G		
Not environmentally friendly - higher CO ₂ emissions		
England & Wales	EU Directive 2002/91/EC	